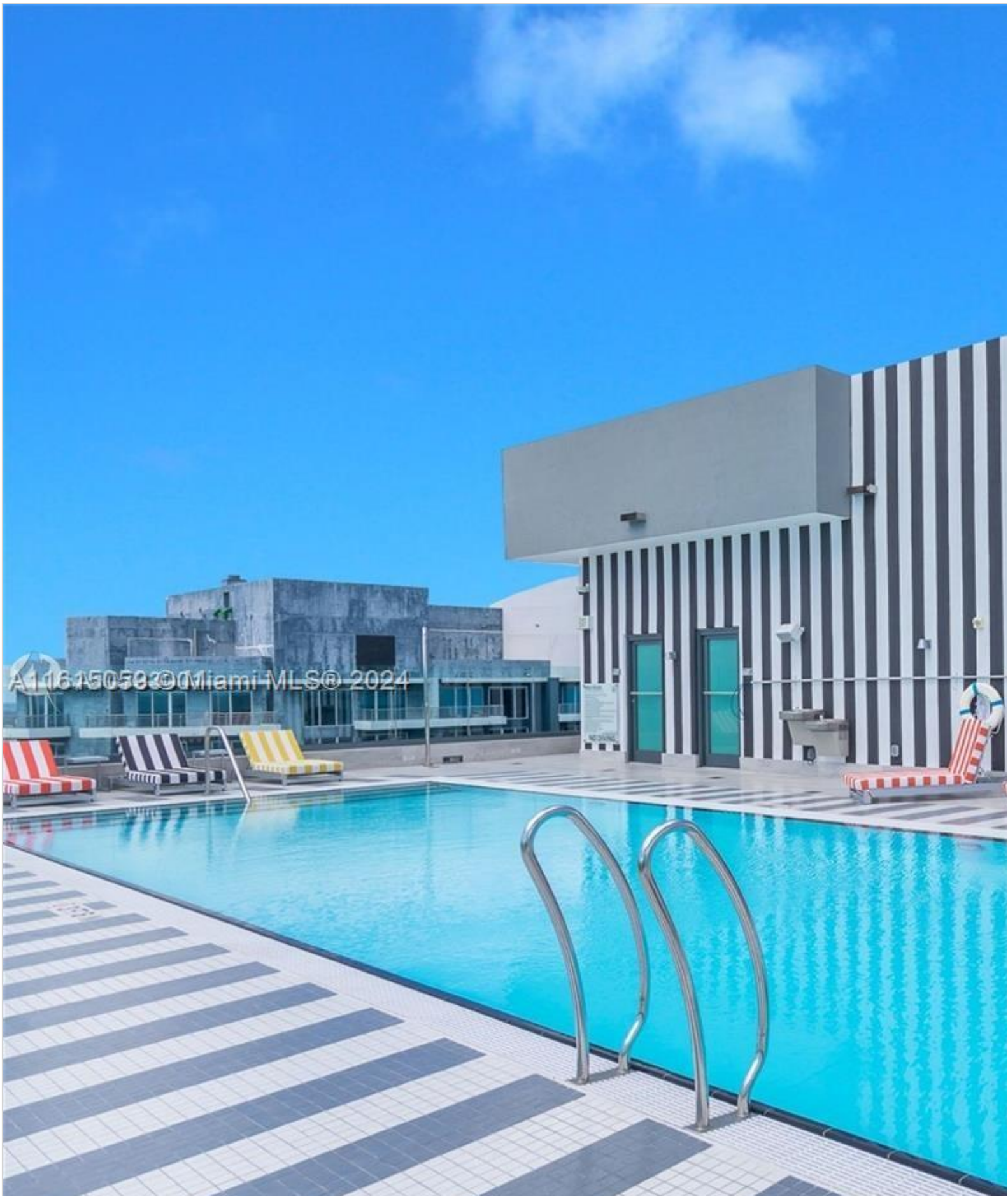
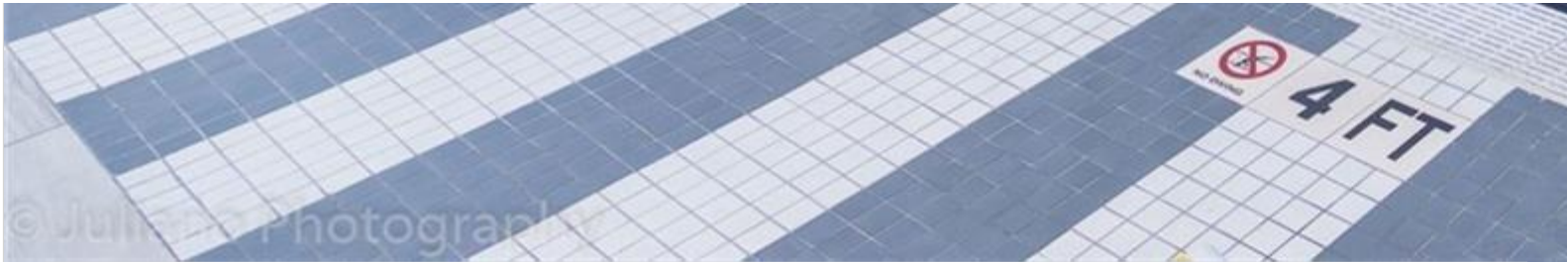


INES FLAX

YOUR PREMIER OCEANFRONT SPECIALIST
& MOST TRUSTED NAME IN SOUTH FLORIDA REAL ESTATE.



A116150503 © Miami MLS © 2024



Price: \$1,350,000

MLS Number: A11615059

Condo / Town Home

1300 S Miami Ave Unit 2405, Miami, Florida 33131 USA

Beds: 3

Baths: 2

Half Baths: 1

Living Area: 1,281

Unit: 2405

HOA Fees: \$0

Waterfront: YES

Year Built: 2016

Community: SIS BRICKELL

Subdivision: SIS BRICKELL

ABOUT THIS PROPERTY

Fantastic views! Now available, & rare to market, the south-east CORNER unit located at the highly coveted SLS BF restaurants, & waterfront walkway. Only a 10 minute ride to Coconut Grove, or South Beach in under 15 minutes flat degree panoramic views at anytime. The building has 24hr doorman, valet parking, rooftop pool + much more!!!

PROPERTY
LOCATION

Image

